


Discover
the possibilities at ...

 **Sprimoglass Hasselt**

Hellebeemden 10, 3500 Hasselt
info@sprimoglass.com
+32 (0)11 28 68 28

 **Sprimoglass Liège**

Route de Louveigné, 94-96, B-4140 Sprimont
info@sprimoglass.com
+32 (0)4 382 41 50



heritage

Authentic,
regardless of the era.

www.sprimoglass.be/en



 **SPRIMOGLASS**

Content

Discover Heritage, the monumental glass from Sprimoglass. You get it all : monumental glass with a traditional appearance that meets all your aesthetic requirements and, at the same time, satisfies modern standards in terms of acoustics, insulation, and safety.



3.

Glass...
past and
present

5.

What is
the ideal
type of
glass?

6.

Version
and
techniques

8.

Delivery
and
installation

11.

Ode to
the past

13.

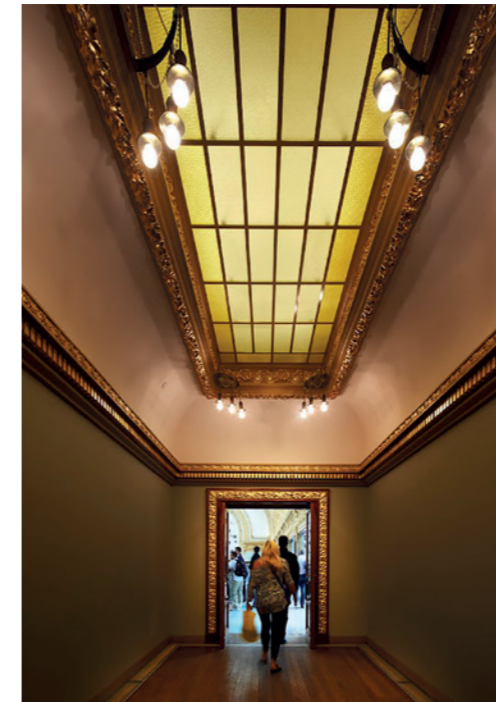
With
modern
quality

15.

A quest for
perfection

Glass... past and present

From craft...
to industrial process.



Today's challenges

Times and processes change, but so do the rules of the game. Today's biggest challenge? Meeting modern requirements for thermal insulation without compromising the authentic character of the glass and the building. You want the entire picture to be complete. Your joinery, your façade, and your glass all contribute to the desired appearance without making compromises.

To reconcile both worlds, technical expertise in design, glass processing, and implementation on site is crucial. This is where we, Sprimoglass, make a difference. We believe every link in the chain is equally important. And we bring your project to fruition by focusing on solutions in close consultation with you.

Up to 1920

Glassmaking... a pure craft that has been around for centuries. Glass from the period up to the beginning of the 20th century is still produced by hand today. Hand-blown glass cylinders are cut open and flattened to obtain flat glass. Back then, a casting process was often used to make the glass with the desired thickness and structure. It takes craftsmen with a lot of patience and intensive training to master the art of making glass perfectly.

Between 1920 and 1960

At the beginning of the 20th century, the world was introduced to the very first industrial glass. And made by a Belgian at that. Émile Fourcault introduced glass drawing. In this Fourcault process, the molten glass mass was drawn up vertically and subjected to a controlled cooling process. This type of glass is known for its visible stripes in the direction it was drawn out.

From 1960 onwards

When float glass, the flat glass we know today, was introduced, it led to many traditional production techniques falling by the wayside. This means that the available range of monumental glass today is so limited that we are forced to develop our own alternatives. The objective then becomes approximating the older, traditional types of glass as closely as possible.

Entrust your project to us

As the market leader in monumental glass in Belgium, Sprimoglass remains committed to continuous product development and tailor-made solutions. This is part of our strategic growth.

What is the ideal type of glass?



Our work starts with choosing the right type of glass. This requires us to look at the entire context of the building, including its future usage. Or at the existing glass that may be partially or fully replaced. All of this determines what type of glass or combination of different types of glass is most appropriate.



Get everyone together quickly

A project has the greatest chance of success when all parties sit down together at an early stage. We strive to do this whenever embarking on a new project. Craftsmanship, teamwork, and extensive consultation are our three keys to successful cooperation.

Version and techniques

All expertise under one roof

With Sprimoglass, you have a partner that takes care of your project from start to finish. With crystal-clear communication throughout the project. We operate out of two locations, Liège, and Hasselt. Our team of specialists takes you through everything to a successful conclusion from advice on the version to final installation. They have mastered all versions and techniques to perfection.

Versions and techniques

We work any chosen type of glass into the desired shape. Mono, Safe, or Iso, each version has its own level of thermal insulation and unique specificities. Discover these below.



Mono Single glazing

Ultrathin, but authentic. We cut this single glazing version to size. Moreover, we have several types of this glass sheet available for you. You can cut the glass yourself, on site or in your workshop. We can provide the glass with the necessary chamfers, angles, or cut-outs.



Safe Laminated glass

At Sprimoglass, we are masters of layering figured glass to special glass laminates. How does layering work? We place a second sheet of glass onto the desired glass, which is connected by a film. This is how we add extra properties to the glass. Layering makes glass resistant to impact. Options include solar, soundproofing, and UV-resistant glass. And how about fire-resistant, burglary-resistant, or bulletproof glass as options. It is also possible to combine multiple applications. Our project advisor will be happy to discuss the various options with you.

Continued — Versions and techniques



Iso Insulating glass

Two or more glass panes are separated by a spacer, which forms a high-quality, insulated windowpane. The space between the glass plates is traditionally filled with argon or krypton. This is always based on the desired insulation value. The available range of spacers gives you a wide choice of materials and heights. We also offer various Viennese patterns combined with the different types of spacers.

These are 'appearance' spacers that optically divide the glass into different compartments. Moreover, it is perfectly possible to combine an Iso window with a laminated inner pane. This is how your Iso glazing will have the same additive properties as those in the Safe range.



Curved glass

Another of our areas of expertise is bending glass, whether it is Mono, Safe, or Iso. We are still one of the few companies that have mastered this craft to perfection. We are quite happy to carry out smaller orders, both in terms of quantity and dimensions.

So, what's next? You provide us with a vector file format, a model of the window, or chord and arrow, to be produced. If it is easier for you, feel free to deliver the window frame to us at our workshop. We will then proceed with measuring the window.

Delivery & installation

Do you want to install the glazing that we made for you? That's fine. But you should know that we can also take care of everything for you.



Timely and safe delivery

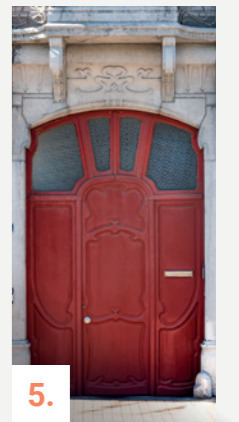
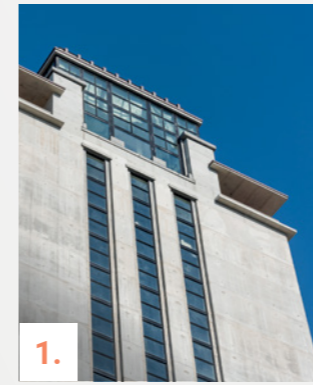
The glass we make is delivered on trestles, to your premises or workshop. And we have specially developed small, wooden trestles for shipping delicate materials. Special consignments are discussed, and delivered in tailor-made boxes or crates. If desired, we can also supply all accessories so that you can start the installation immediately.



Installation and sealing

Which putty or tools do you need when installing the glass? We are happy to advise you about using and working with the various sealants and can provide you with all of the necessary supplies. However, note that a project often requires different materials with complex chemical compatibility. We are also happy to provide you with advice about this.

Of course, we can also take care of the entire installation for you. You can then be 100% sure of a high-quality, eye-catching, authentic end result.



A small selection from our many references ...

1. Boekentoren, Ghent
2. GuldenSporencollege, Kortrijk
3. Stadsfeestzaal, Antwerp
4. Hôtel Pasquet d'Acosse, Namur
5. Maison Guillaume, Arlon
6. Property of Dr. Guislain, Ghent
7. Schaerbeek railway station

Ode to the past

The windows are the mirrors of the past in a building that breathes history from every pore. With Vectio and Vitruvio, we are restoring the past in all of its glory across different time periods.

We give your restoration glass an unprecedented beauty and appearance thanks to **our high-end process developed 100% in-house.** Matching the relevant period with its characteristics, from slight distortions and drawing lines to pronounced swirls.

It is typical of the first generation of industrially drawn glass or hand-blown glass. And timelessly authentic with respect for tradition. But it is also ready to 'function' **as per the requirements of the 21st century, both in terms of insulation and safety.** And thus complete the circle with the present.



With modern quality

VECTIO

Belgian engineer and inventor **Émile Fourcault** developed the first flat window glass in 1914. He used a comb to draw 'Fourcault glass' out of a bath of molten glass. This technique gave rise to its typical appearance: 'drawing lines' in the longitudinal direction of the glass.

Visually authentic vs contemporary practical

This technique gradually faded into the background. This very typical glass is rarely available today. Which is why the need arose for industrial variants to complement this assortment. The industrial processes recreate the appearance of the originally drawn glass. Be sure to discover Vectio, our in-house developed industrial restoration glass.

Glass type	Thickness tolerances (mm)	Standard dimensions (mm x mm)	Light transmission factor τ_v (%)	G-value (%)	Light reflection ρ_{vi} (%)	Colour rendering index RD65 Ra (%)
Vectio 3 mm	± 0.25	2,250 x 1,605 mm	91	89	8	99
Vectio 4 mm	± 0.25	2,250 x 1,605 mm	91	88	8	99

Easy to work...

Cutting, layering, transforming into insulating glass... Vitruvio and Vectio are easy to handle. Moreover, as a craftsman, you do not have to consider the cutting direction, which increases the cutting efficiency. Vitruvio and Vectio are also available in extra-large sheets of 2,250 x 1,650 mm.

VITRUVIO

The greatest strength of Vitruvio? We believe this is the respect it has for both the past and the present. This offers some undeniable advantages for you as a professional.

Visually authentic vs contemporary practical

Vitruvio has the appearance and liveliness of traditional hand-blown-blown or cast glass. Our restoration glass combines this authenticity with today's visual requirements: an extremely clear glazing pane with low reflection and an optimal view from inside to outside. Vitruvio is available in three grades: slight, medium, and strong distortion. So, this restoration glass meets the different styles across the eras.

Glass type	Thickness tolerances (mm)	Standard dimensions (mm x mm)	Light transmission factor τ_v (%)	G-value (%)	Light reflection ρ_{vi} (%)	Colour rendering index RD65 Ra (%)
Vitruvio Pure	± 0.25	2,250 x 1,605 mm	91	3 mm: 91 4 mm: 90	8	100
Vitruvio Classic	± 0.30	2,250 x 1,605 mm	91	3 mm: 91 4 mm: 90	8	100
Vitruvio Intense	± 0.35	2,250 x 1,605 mm	91	3 mm: 91 4 mm: 90	8	100

...and optimise

Modern times mean stricter building requirements. Vitruvio can be worked to perfectly meet today's standards in terms of insulation, safety, and acoustics. The authentic look of this restoration glass will be fully preserved regardless of your chosen application.

A search for perfection

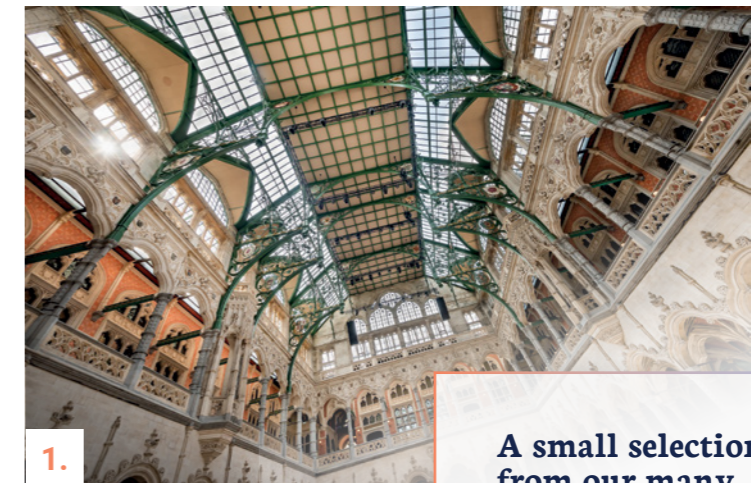
... which led to an innovative development.



As the market leader in the restoration glass sector, Sprimoglass has dedicated attention to its extensive heritage glazing range for historic buildings and monuments for many years.

Following much discussion with specialised architects, craftsmen, and consultants in the heritage sector, there appeared to be a severe deficiency in the existing range of glass types for restoration purposes.

The types of glass needed did not exist in the market, so we decided to forge ahead with developing it ourselves. Our specialists studied old glass types and used our knowledge of glassmaking to design new types of restoration glass that meet the expectations of the industry more than ever. And so, Vitruvio and Vectio were born.



A small selection from our many references ...

1. Handelsbeurs, Antwerp
2. Stadhuis, Halle
3. Boekentoren, Ghent
4. Salvator Cathedral, Bruges
5. Huis der Vrije Schippers, Ghent
6. Kasteel ter Borght, Westmeerbeek

